

CIVIC CENTER TRACK FLOORING REPLACEMENT

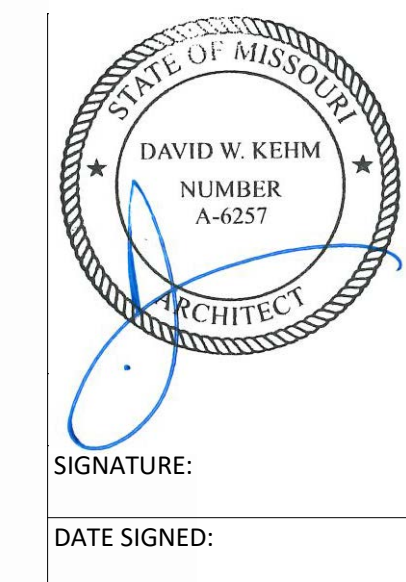
OWNER:

CITY OF FARMINGTON, MISSOURI

ISSUANCE:

ISSUED FOR ---- SEPTEMBER 3, 2024

FGM Architects Inc.
1 Metropolitan Sq, Ste. 1945
St. Louis, Missouri 63102
Phone : 314.439.1601
Fax : 314.439.1602
www.fgmarchitects.com

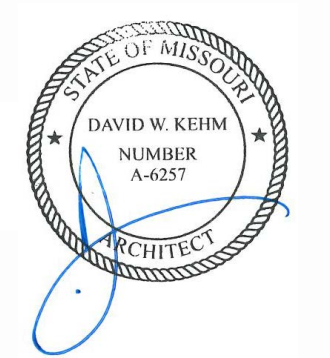


FGM Architects Inc.
1 Metropolitan Sq, Ste. 1945
St. Louis, Missouri 63102

314.439.1601 OFFICE
314.439.1602 FAX

MISSOURI CERTIFICATE OF
AUTHORITY #000311

ARCHITECT
FGM ARCHITECTS INC.
1 METROPOLITAN SQUARE, SUITE 1945
ST. LOUIS, MISSOURI, 63102
314.439.1601 (O) 314.439.1602 (F)
MO STATE CERTIFICATE OF AUTHORITY
NO. 000321



DAVID KEHM - ARCHITECT
ST #A-6257

The professional architect seal affixed to this sheet applies only to the material and items shown on this sheet. All drawings, instruments or other documents not exhibiting this seal shall not be considered prepared by this architect, and this architect expressly disclaims any and all responsibility for such plan, drawings or documents not exhibiting this seal. Revisions to technical submissions which are not made or approved by the licensee are prohibited.

DATE 11/30/2024

[illegible]

CIVIC CENTER TRACK FLOORING REPLACEMENT
CITY OF FARMINGTON, MISSOURI

CIVIC CENTER TRACK FLOOR
CITY OF FARMINGTON, MISSOURI
2 BLACK KNIGHT DRIVE
FARMINGTON, MISSOURI 63640

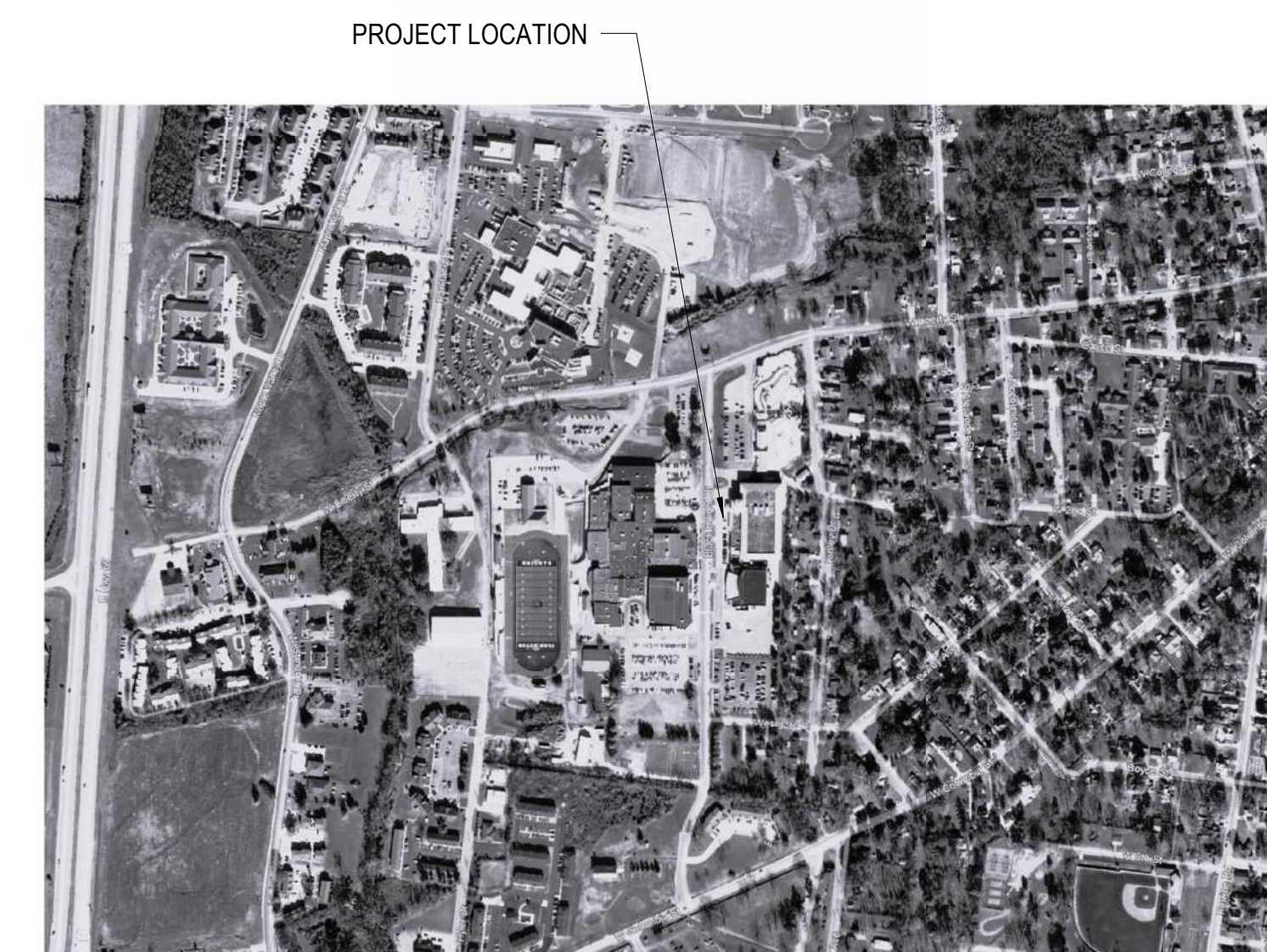
ISSUED FOR BID/PERMIT

COVER SHEET

SHEET NO.

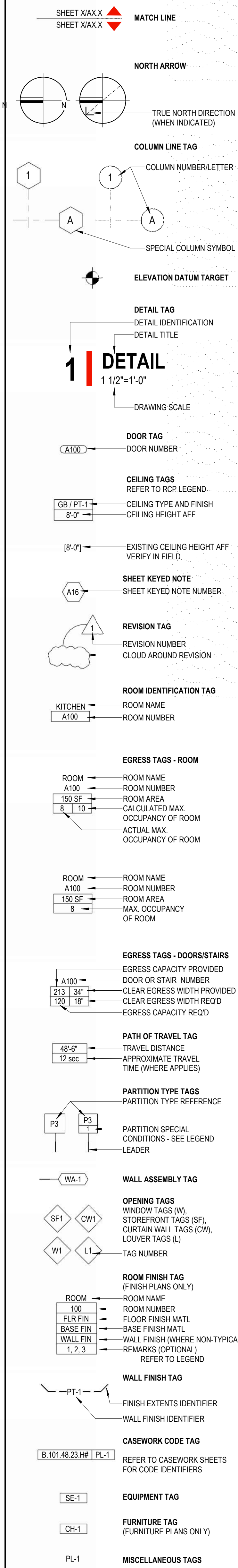
GO.0

JOB NO. 24-4006.02B
© 2024 FGM Architects Inc.



1 VICINITY MAP

GRAPHIC AND MATERIAL SYMBOLS

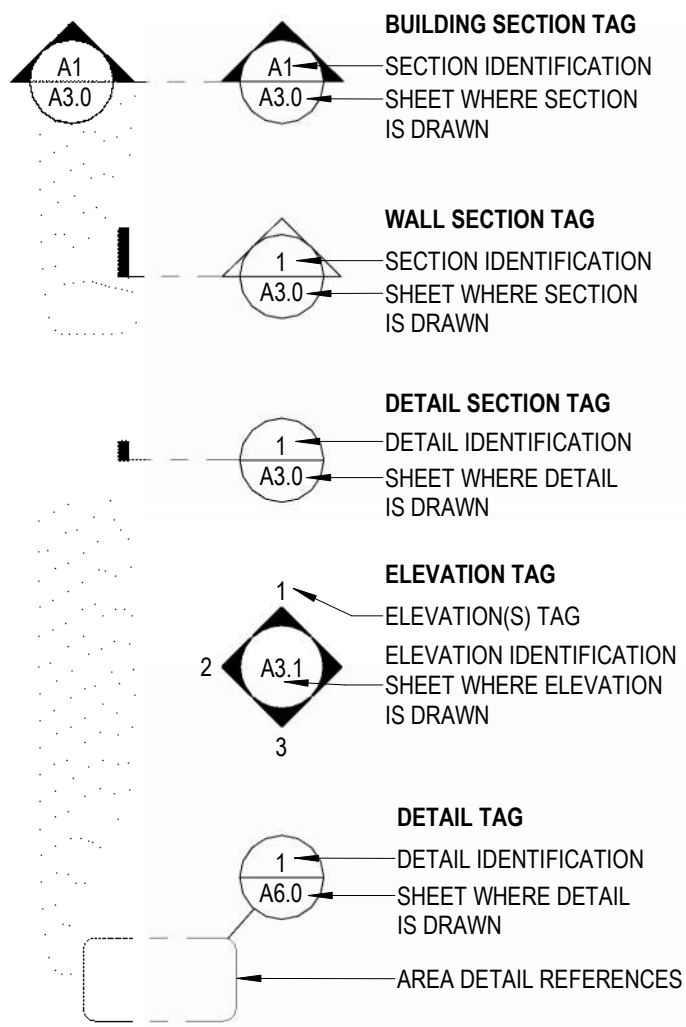


TAGS & ANNOTATIONS

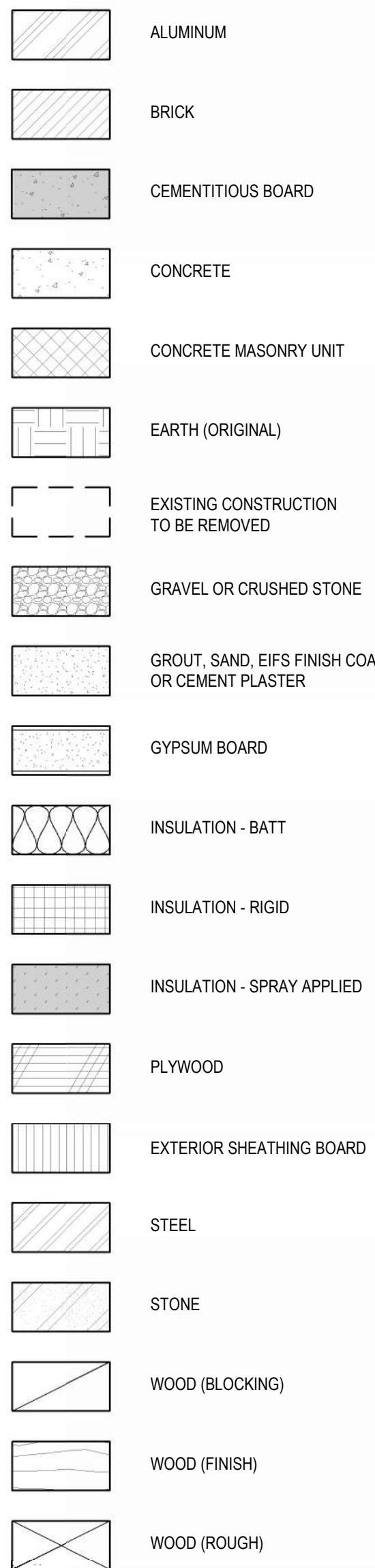
ABBREVIATIONS

8	AND	DWG	DRAWING	JT	JOINT	SC	SEALED CONCRETE
9	ANGLE	E.P.	ELECTRICAL PANEL	KW	KILOWATT	SCHED	SCHEDULE
@	AT	EA	EACH	LAM	LAMINATE	SCD	STATIC CONDUCTIVE TILE
⌒	CENTER LINE	EF	EPOXY FLOOR COATING	LAV	LAVATORY	SDC	DECORATIVE SEALED CONCRETE
⌀	DIAMETER OR ROUND	EIFS	EXTERIOR INSULATION AND FINISH SYSTEMS	LF	LIGHT FIXTURE	SDT	STATIC DISSIPATIVE TILE
#	POUND OR NUMBER	EJ	EXPANSION JOINT	LL	LIVE LOAD	SECT	SECTION
ACT	ACOUSTICAL CEILING	ELEC	ELECTRICAL	LN	LINOLEUM FLOORING	SF	SQUARE FEET
ADA	ACCESSIBLE	ELEV	ELEVATION	LP	LOW POINT	SHT	SHEET
ADJ	ADJACENT	ENCL	ENCLOSURE	LT	LIGHT	SIM	SIMILAR
AFF	ABOVE FINISH FLOOR	EQ	EQUAL	LVT	LUXURY VINYL TILE OR PLANK	SPEC	SPECIFICATION
AL	ALUMINUM	EQUIP	EQUIPMENT	MATL	MATERIAL	SQ	SQUARE
APPROX	APPROXIMATELY	ERF	EPOXY RESINOUS FLOORING SYSTEM	MAX	MAXIMUM	SS	STAINLESS STEEL
ARCH	ARCHITECTURAL	ERFB	EPOXY RESINOUS FLOORING BASE	MB	MARKER BOARD	SSC	SEALED + STAINED CONCRETE
AWP	ACOUSTICAL WALL PANEL	EW	ELECTRIC WATER COOLER	MECH	MECHANICAL	SSF	SOLID SURFACE OR SIMULATED STONE MATERIAL
B/	BOTTOM OF	EX	EXISTING	MH	MANHOLE	ST	STONE
BD	BOARD	EXP	EXPOSED CONSTRUCTION	MIN	MINIMUM	ST.N	STAIR NOSING
BL	BLINDS	EXT	EXTERIOR	MISC	MISCELLANEOUS	STB	STONE BASE
BLDG	BUILDING	F.F.	FACTORY FINISH	MO	MASONRY OPENING	STD	STANDARD
BLKG	BLOCKING	FA	FIRE ALARM	MTD	MOUNTED	STL	STEEL
BR	BRICK	FD	FLOOR DRAIN	MTL	METAL	STN	STAIN
BRZ	BRONZE	FDN	FOUNDATION	MTLB	METAL WALL BASE	SUSP	SUSPENDED
CAB	CABINET	FE	FIRE EXTINGUISHER	MTLC	METAL CEILING PANELS	SYM	SYMMETRICAL
CB	CHALK BOARD	FEC	FIRE EXTINGUISHER CABINET	NC	NOT IN CONTRACT	T&G	TONGUE AND GROOVE
CEM	CEMENTITIOUS	FF	FINISH FLOOR	NO	NUMBER	T.S.	THICK STEEL
CG	CORNER GUARD	FHC	FIRE HOSE CABINET	NOM	NOMINAL	T/	TOP OF
CI	CAST IRON	FHVC	FIRE HOSE VALVE CABINET	NTS	NOT TO SCALE	TB	TACK BOARD
CJ	CONTROL JOINT	FIN	FINISH	OC	ON CENTER	TC	TRAFFIC COATING
CL	CLOSET	FLR	FLOOR	OD	OUTSIDE DIAMETER	THRES	THRESHOLD
CLG	CEILING	FLUOR	FLOUORESCENT	OH	OVERHEAD	TP	TOILET PARTITIONS
CLR	CLEAR	FRP	FIBERGLASS REINFORCED POLYESTER	OPNG	OPENING	TR	TREAD
CMU	CONCRETE MASONRY UNIT	FS	FLOOR SINK	OPP	OPPOSITE	TW	TACTILE WARNING
COL	COLUMN	FSR	FLAME SPREAD RATINGS	P.L	PROPERTY LINE	TYP	TYPICAL
CONC	CONCRETE	FT	FOOT OR FEET	PB	PARTICLE BOARD	TZ	TERRAZZO FLOOR
CONSTR	CONSTRUCTION	FTG	FOOTING	PC	PRECAST	TZB	TERRAZZO BASE
CONT	CONTINUOUS	GA	GAUGE	PERP.	PERPENDICULAR	TZST	TERRAZZO STAIR TREAD
CONTR	CONTRACTOR	GALV	GALVANIZED STEEL	PHL	PHENOLIC LAMINATE MATERIAL	UNO	UNLESS NOTED OTHERWISE
CORR	CORRIDOR	GB	GYPSUM BOARD	PL	PLASTIC LAMINATE	V.I.F.	VERIFY IN FIELD
CPT	CARPET	GBMU	GLAZED BLOCK MASONRY UNIT	PLAS	PLASTER	VCT	VINYL COMPOSITION TILE
CT	CERAMIC OR PORCELIN TILE	GFMU	GROUND FACE MASONRY UNIT	PLUMB	PLUMBING	VDB	VISUAL DISPLAY BOARD
CTB	CERAMIC TILE BASE	GFT	GLASS FLOOR TILE	PLWD	PLYWOOD	VERT	VERTICAL
CUH	CABINET UNIT HEATER	GL	GLAZING	PR	PAIR	VT	VINYL TILE
D.L.	DEAD LOAD	GND	GROUND	PT	PAINT	WVC	VINYL WALL COVERING
DBL	DOUBLE	HB	HOSE BIBB	QTY	QUANTITY	W.C.	WATER CLOSET
DCPH	DETENTION CEILING PLANKS (HIGH SECURITY CEILING - JAIL)	HDWD	HARDWOOD	QZ	QUARTZ TILE	W.P.	WORKING POINT
DERF	DETENTION EPOXY RESINOUS FLOORING	HDWR	HARDWARE	R	RISER	W/	WITH
DET	DETAIL	HORIZ	HORIZONTAL	RAD	RADIUS	W/O	WITHOUT
DF	DRINKING FOUNTAIN	HP	HIGH POINT	RB	RESILIENT BASE	WC	WALL COVERING
DFC	DECORATIVE FILM	HPT	HIGH POINT	RCB	RESILIENT COVE BASE	WCPT	WALKOFF CARPET
DIA	DIAMETER	HPC	HIGH PERFORMANCE COATING	RC	REFLECTED CEILING PLANK	WD	WOOD
DM	DIMENSION	HT	HEIGHT	RGP	ROUGH GROUT	WDB	WOOD BASE
DN	DOWN	I.D.	INSIDE DIAMETER	RO	ROUGH OPENING	WDC	WOOD CEILING PANELS
DO	DOOR OPENING	INT	INTERIOR	REC	RECESSED	WDF	WOOD FLOORING
DP	DRAPERY OR SHEAR	ILCS	LUMINOUS CEILING SYSTEM	REINF	REINFORCED	WDSF	SPORTS FLOORING - WOOD
DPC	DECORATIVE PLASTER COATING	IN	INCH	REQ	REQUIRED	WF	WINDOW FILM
DR	DOOR	INSUL	INSULATION	RF	RESILIENT FLOORING	WP	WALL PROTECTION
DS	DOWNSPOUT	INT	INTERIOR	RM	ROOM	WSC	WOOD SOLID CORE
DSM	DECORATIVE SURFACE MATERIAL	INV	INVERT	RO	ROUGH OPENING	WT	WEIGHT
DSPL	DETENTION CEILING PANELS (LOW SECURITY CEILING - BOOKING)	JAN	JANITOR	RS	ROLLER SHADE	WWP	WOOD WALL PANEL
		JC	JANITOR CLOSET	RSB	RESILIENT STRAIGHT BASE	XTR	EXISTING TO REMAIN
				RSF	RESILIENT SPORTS FLOORING	YD	YARD

TAGS & ANNOTATIONS



VIEW SYMBOLS



THIS LEGEND IS A GENERIC REPRESENTATION OF MATERIALS SHOWN IN CROSS SECTION AND IS INTENDED FOR GRAPHIC CLARITY ONLY. IT DOES NOT REPRESENT SPECIFIC PRODUCTS, BRANDS, OR OTHERWISE INDICATE PERFORMANCE REQUIREMENTS.

MATERIAL SYMBOLS

GENERAL ARCHITECTURAL NOTES

GENERAL ARCHITECTURAL NOTES

- A. FIRE RESISTANCE COMPLIANCE**
- A.06 ALL RATINGS ARE TO COMPLY WITH UNDERWRITERS LABORATORIES (UL) TEST RATINGS.
- B. DIMENSIONING**
- B.02 ALL DIMENSIONS SHALL BE VERIFIED IN THE FIELD AND COORDINATED WITH THE WORK OF ALL TRADES PRIOR TO PROCEEDING WITH THE WORK. NOTIFY ARCHITECT OF DESCREPANCIES.
- D. MISCELLANEOUS NOTES**
- D.01 WHERE DISCREPANCIES EXIST BETWEEN THE DRAWINGS OF THE VARIOUS TRADES, CONSULT THE ARCHITECT BEFORE PROCEEDING WITH WORK.
- D.02 ALL DISSIMILAR METALS SHALL BE EFFECTIVELY ISOLATED FROM EACH OTHER TO AVOID GALVANIC REACTION.
- D.03 THE CONTRACTOR SHALL BE RESPONSIBLE FOR ANY AND ALL DAMAGE DURING CONSTRUCTION. THE CONTRACTOR WILL REPAIR AND/OR REPLACE ALL DAMAGED MATERIALS TO NEW CONDITION.
- D.04 ALL REFUSE AND DEBRIS SHALL BE REMOVED FROM THE SITE AND LEGALLY DISPOSED OF BY THE CONTRACTOR.

GENERAL NOTES

1. DO NOT SCALE THE DRAWINGS. THE DRAWINGS ARE NOT NECESSARILY TO SCALE. THE CONTRACTOR SHALL VERIFY ALL CONDITIONS AND DIMENSIONS AT THE JOB SITE PRIOR TO THE START OF CONSTRUCTION. IF DISCREPANCIES ARE FOUND, THE ARCHITECT SHALL BE NOTIFIED FOR CLARIFICATION BEFORE COMMENCING THE WORK. EXPLICIT DIMENSIONS SHALL HAVE PRECEDENCE OVER SCALE.
2. ALL CONSTRUCTION SHALL BE IN ACCORDANCE WITH THE REQUIREMENTS OF THE APPLICABLE CODES.
3. THE OWNER WILL NOT ACCEPT REQUESTS FOR ADDITIONAL COSTS FOR WORK CONDITIONS WHICH CAN BE REASONABLY ASCERTAINED FROM THE DRAWINGS AND SPECIFICATIONS.
4. ASBESTOS-CONTAINING MATERIALS, LEAD-CONTAINING PAINT OR OTHER INDUSTRY REGULATED OR HAZARDOUS MATERIALS OR TOXIC SUBSTANCES SHALL NOT BE USED ON THIS PROJECT.

APPLICABLE BUILDING CODES

- 2015 INTERNATIONAL BUILDING CODE

INDEX OF DRAWINGS	
SHEET NUMBER	SHEET NAME
GENERAL	
GG 0	COVER SHEET
GG 1	ARCHITECTURAL SYMBOLS, ABBREVIATIONS & GENERAL NOTES
ARCHITECTURAL DEMO	
AD1.0	OVERALL CIVIC CENTER DEMOLITION PLAN
ARCHITECTURAL	
A1.0	OVERALL CIVIC CENTER FLOOR PLAN

fgma

FGM Architects Inc.
1 Metropolitan Sq, Ste. 1945
St. Louis, Missouri 63102

314.439.1601 OFFICE
314.439.1602 FAX

MISSOURI CERTIFICATE OF
AUTHORITY #000311

ARCHITECT
FGM ARCHITECTS INC.
1 METROPOLITAN SQUARE, SUITE 1945
ST. LOUIS, MISSOURI, 63102
314.439.1601 (O) 314.439.1602 (F)
MO STATE CERTIFICATE OF AUTHORITY
NO. 000311



DAVID KEHM - ARCHITECT
ST #A-6257
The professional architect seal affixed to this sheet applies only to the material and items shown on this sheet. All drawings, instruments or other documents not exhibiting this seal shall not be considered prepared by this architect, and this architect expressly disclaims any and all responsibility for such plan, drawings or documents not exhibiting this seal. Revisions to technical submissions which are not made or approved by the licensee are prohibited.
DATE 11/30/2024

[illegible]

CIVIC CENTER TRACK FLOORING REPLACEMENT

CITY OF FARMINGTON, MISSOURI
2 BLACK KNIGHT DRIVE
FARMINGTON, MISSOURI 63640

ISSUED FOR BID/PERMIT

ARCHITECTURAL SYMBOLS, ABBREVIATIONS & GENERAL NOTES

SHEET NO.

GO.1

JOB NO. 24-4006.02B
© 2024 FGM Architects Inc.



DAVID KEHM - ARCHITECT
ST #A-6257
The professional architect seal affixed to this sheet applies only to the material and items shown on this sheet. All drawings, instruments, and other documents not exhibiting this seal shall not be considered prepared by this architect, and this architect expressly disclaims a and all responsibility for such plan, drawings or documents not exhibiting this seal. Revisions to technical submissions which are made or approved by the licensee are prohibited.
DATE 11/30/2024

[illegible]

CIVIC CENTER TRACK FLOORING REPLACEMENT
CITY OF FARMINGTON, MISSOURI
2 BLACK KNIGHT DRIVE
FARMINGTON, MISSOURI 63640

ISSUED FOR BID/PERMIT

OVERALL CIVIC CENTER DEMOLITION PLAN

SHEET NO.

AD1.0

JOB NO. 24-4006.02B
© 2024 FGM Architects Inc.

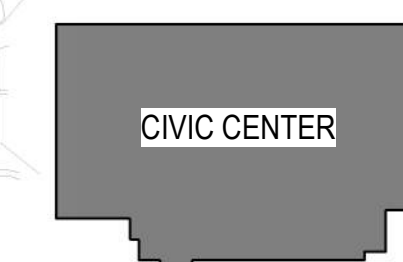
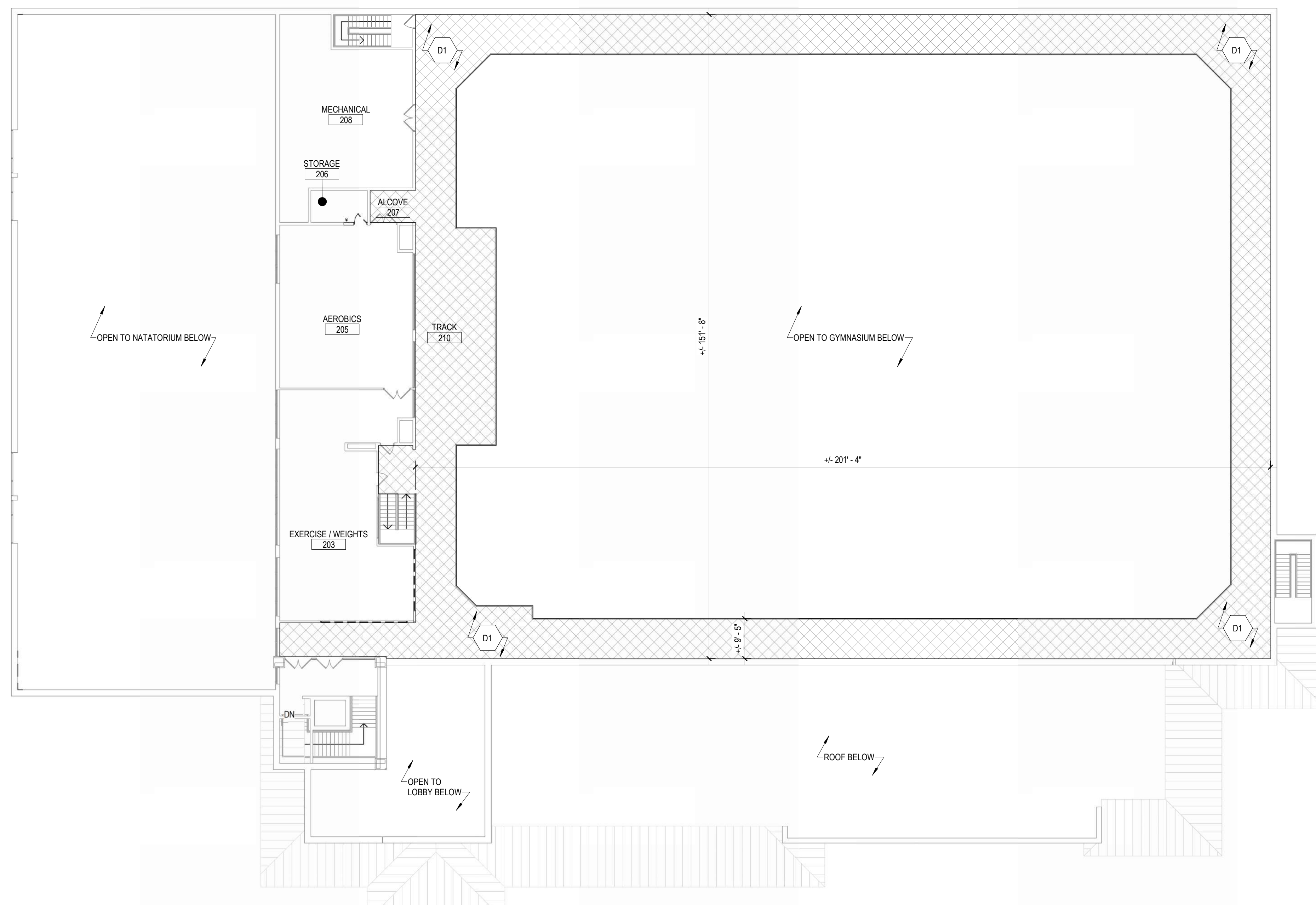
1. REFER TO G-SEES SHEETS FOR TYPICAL ABREVIATIONS, SYMBOLS & TAGS.
2. VERIFY LOCATION AND CONDITION OF WALLS, CEILINGS, FLOORS, EQUIPMENT, FIXTURES AND ALL INCIDENTAL ACCESSORIES PRIOR TO DEMOLITION. REPORT DISCREPANCIES BETWEEN THE CONSTRUCTION DOCUMENTS AND EXISTING CONSTRUCTION TO THE ARCHITECT/ENGINEER.
3. DO NOT KICK OUTS ANCHORS. MAINTAIN EXITS AS INDICATED, AND DO NOT INDICATE MAINTAIN AT LEAST TWO EXITS OUT OF ALL AREAS IN ACCORDANCE WITH LOCAL JURISDICTION. AT ALL TIMES DURING DEMOLITION, PROTECT ADJACENT SURFACES TO REMAIN. REPAIR DAMAGED SURFACES SCHEDULED TO REMAIN USING MATERIALS AND METHODS TO MATCH EXISTING CONSTRUCTION.
4. REMOVE ALL DEBRIS FROM SITE ON A DAILY BASIS AND DISPOSE OF LEGALLY.
5. DASHED LINES INDICATE MATERIAL TO BE REMOVED. REMOVE CONSTRUCTION UP TO DEFINED LIMITS. REFER TO SHEET KEY NOTES FOR SPECIFIC INFORMATION.

12" = 1'-0"

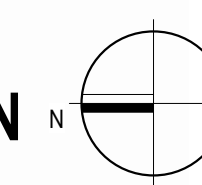
DEMO PLAN KEYED NOTES	
TAG	DESCRIPTION
D01	TAKE PRECAUTION NOT TO DAMAGE THE FINISH ON THE EXISTING WALLS WHEN REMOVING THE VINYL WALL BASE. IF DAMAGED, REPAIR ANY DAMAGE AND REPAINT THE WALL



1/8" = 1'-0"



1" = 160'-0"



[illegible]

CIVIC CENTER TRACK FLOORING REPLACEMENT
CITY OF FARMINGTON, MISSOURI
2 BLACK KNIGHT DRIVE
FARMINGTON, MISSOURI 63640

ISSUED FOR BID/PERMIT

OVERALL CIVIC CENTER FLOOR PLAN

SHEET NO.

A1.0

JOB NO. 24-4006.02B
© 2024 FGM Architects Inc.

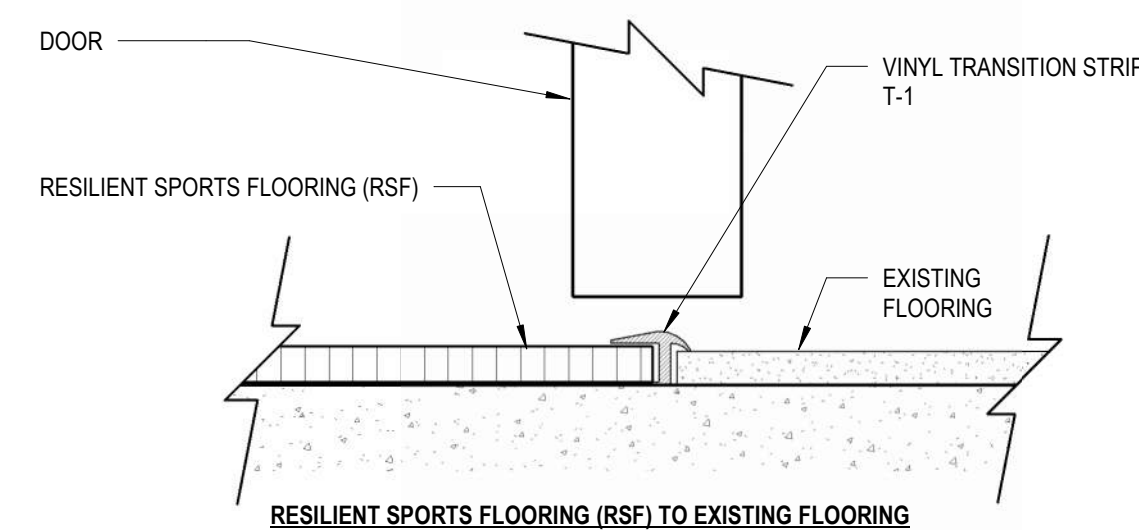
GENERAL FLOOR PLAN NOTES

1. REFER TO G-SERIES SHEETS FOR TYPICAL ABBREVIATIONS, SYMBOLS & TAGS.

RCB-1	<u>RESILIENT COVE BASE</u>
MANUFACTURER:	JOHNSONITE
PRODUCT:	JOHNSONITE WALL BASE DURACOVE THERMOPLASTIC RUBBER 1/8" (TYPE TP)
COLOR:	TAB BEDROCK
SIZE:	4" COVE BASE / 1/8TH
RSF-1	<u>RESILIENT SPORTS FLOORING</u>
MANUFACTURER:	NWR SPORT
PRODUCT:	PROXL / FOSSIL 512
SIZE:	1M 1M (39.4" X 39.4")
THICKNESS:	10MM
FINISH:	MATTE
CONTACT:	SPARTAN SURFACES KATIE DELO kdeelo@spartansurfaces.com (314) 952-7610
T-1	<u>TRANSITION STRIP</u>
MANUFACTURER:	JOHNSONITE
PRODUCT:	CONTRACTOR TO VERIFY PRODUCT NEEDED WITH EXISTING CONDITIONS
COLOR:	TAB BEDROCK

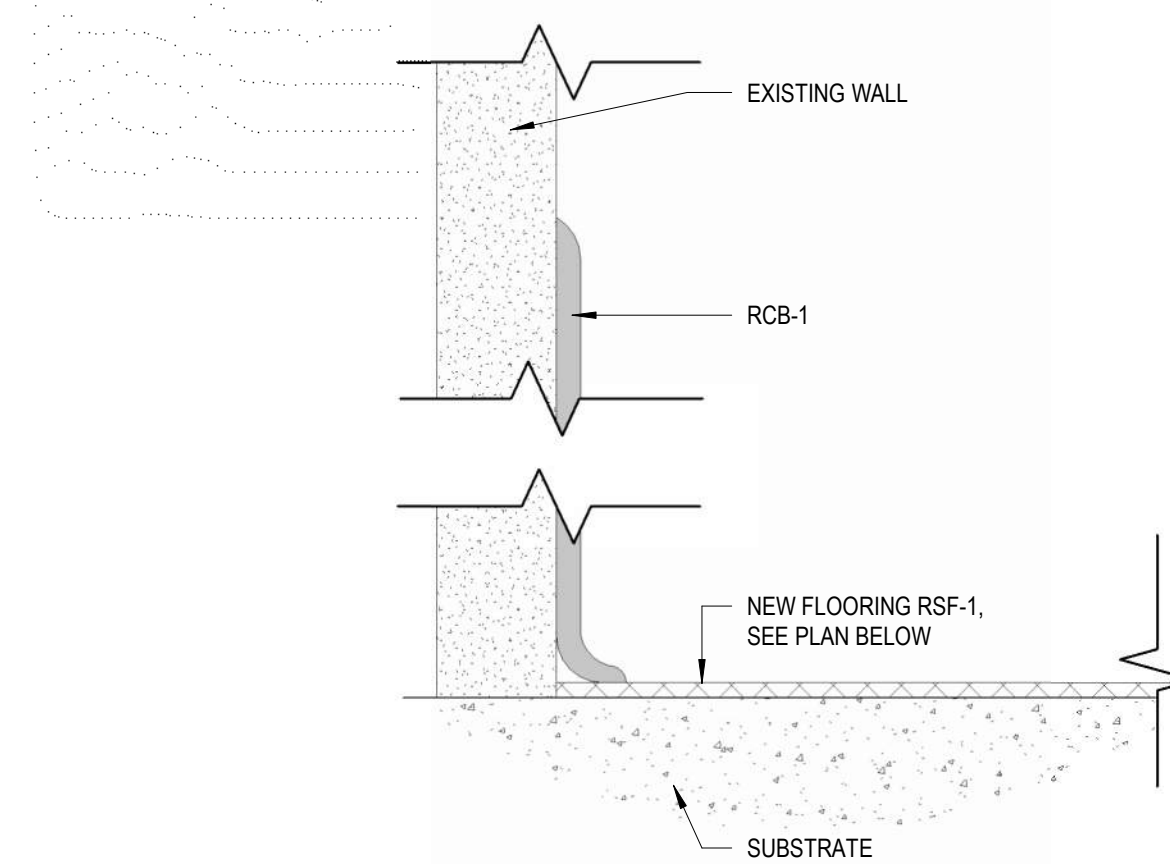
MATERIAL FINISH LEGEND

12" = 1'-0"



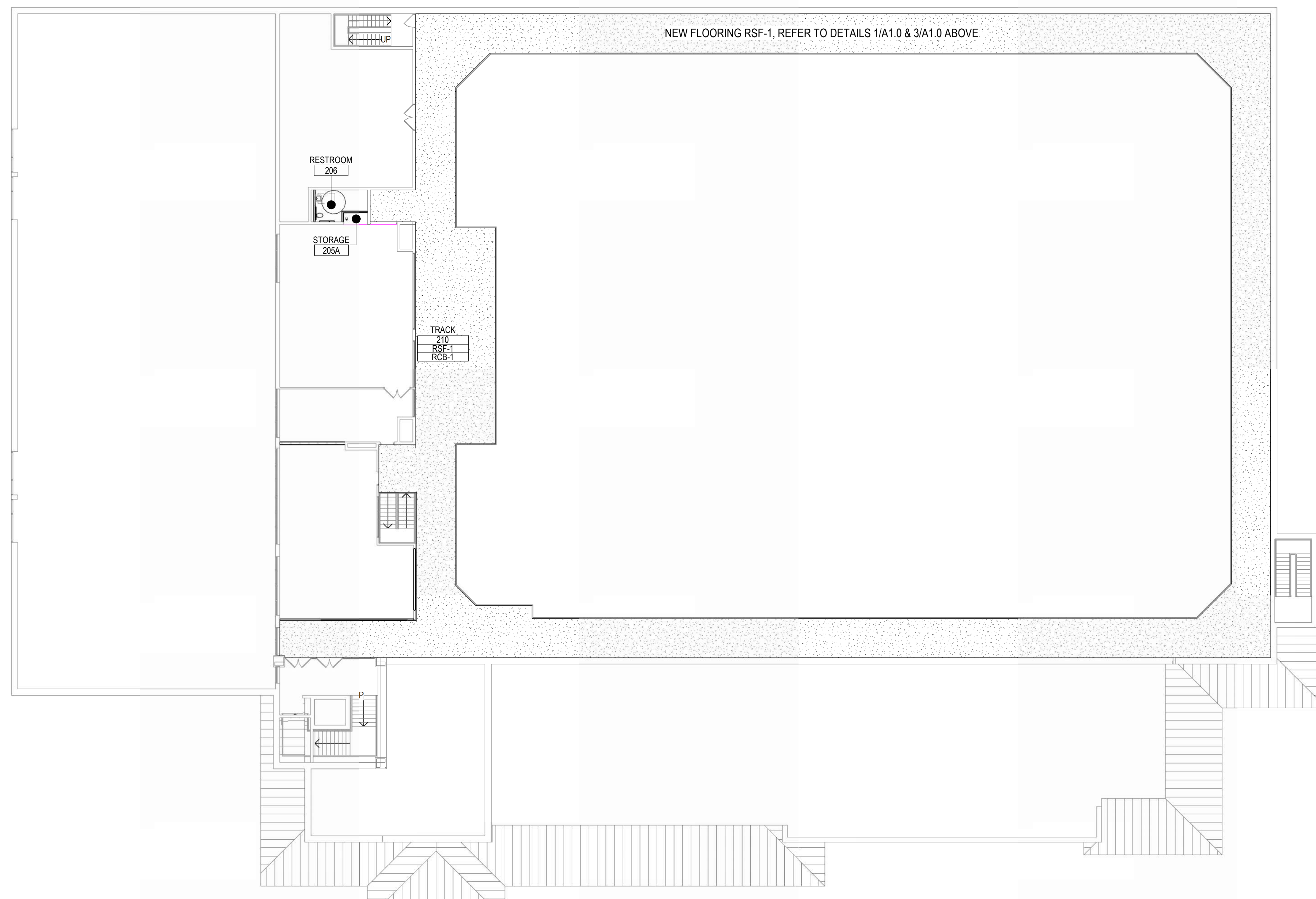
3 FLOOR TRANSITION DETAILS

6" = 1'-0" *DETAIL AT ALL DOORS AND STAIR OPENINGS

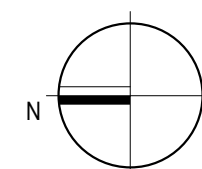


1 RCB DETAIL

12" = 1'-0" *DETAIL AT NEW FLOORING AND EXISTING WALL



2 | OVERALL SECOND FINISH FLOOR PLAN

$$1/16'' = 1'-0''$$


KEY PLAN

1" = 160'-0"

